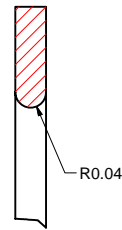
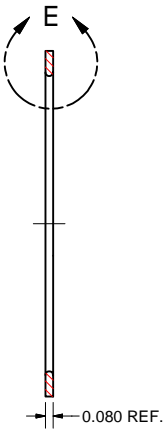


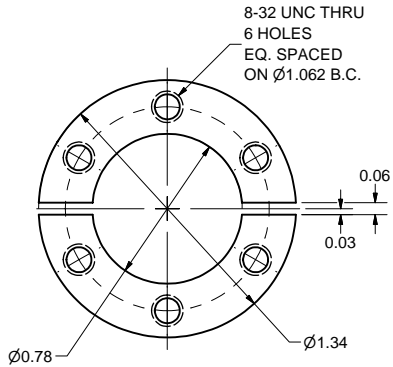
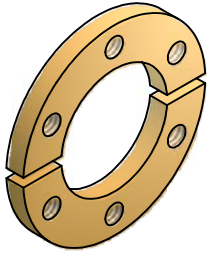
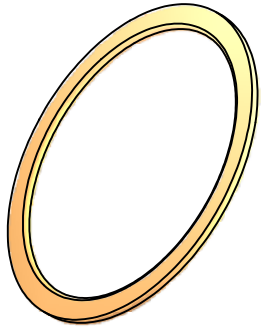
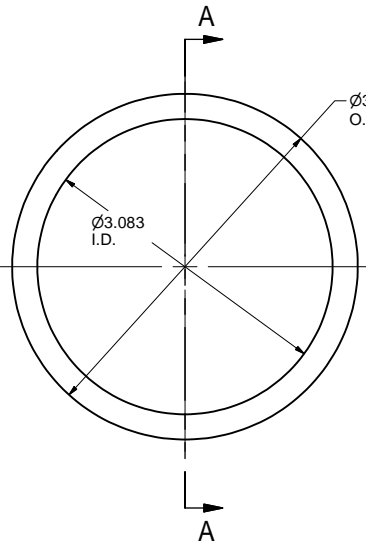
REVISIONS				
SYM.	ZONE	DESCRIPTION	DATE	APP.
A		CHANGED DWG. TITLE NAME + ADDED SH.2	TMK 4/30/07	JOS
B		PARTS ITEM 4, 5 AND 6 ADDED.	6/29/07	VM
C		ADDED PART 7.	D.M.E. 8-30-07	JOS



DETAIL E  
SCALE 4 : 1

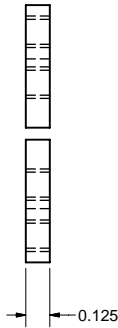


SECTION A-A  
SCALE 1 : 1



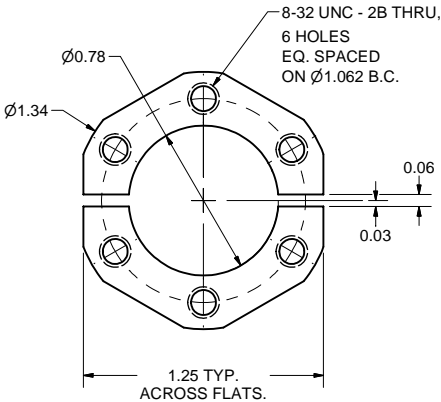
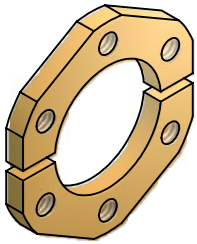
8-32 NUT PLATE

FILE NAME: 7102-024  
SHEET NO.: 1  
DFT. SCALE: 2:1  
MATERIAL: SILICON BRONZE  
QTY: VAR.  
NOTES:



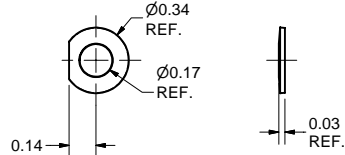
1 4-5/8" CF GASKET MODIF. - 78

FILE NAME: 7102-024  
SHEET NO.: 1  
DFT. SCALE: FULL  
MATERIAL: MAKE FROM VARIAN FG-0462-CU OR EQUIV.  
QTY: ----  
NOTES:



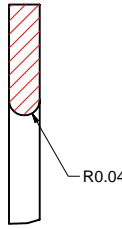
8-32 NUT PLATE W/ 6 FLATS

FILE NAME: 7102-024  
SHEET NO.: 1  
DFT. SCALE: 2:1  
MATERIAL: SILICON BRONZE  
QTY: VAR.  
NOTES:

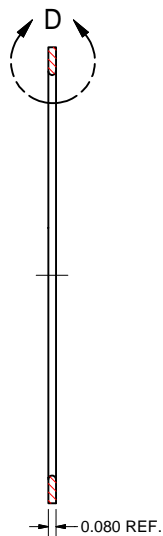


#8 BELLEVILLE WASHER MODIF.

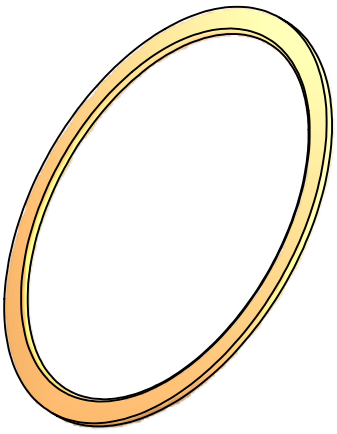
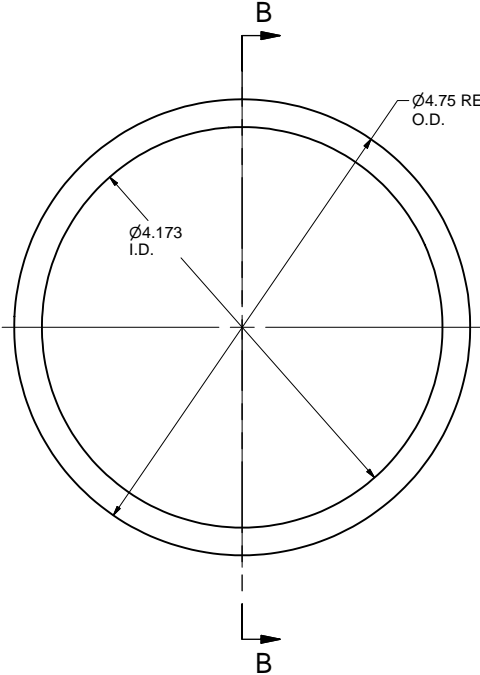
FILE NAME: 7102-024  
SHEET NO.: 1  
DFT. SCALE: 2:1  
MATERIAL: SEE NOTE 1  
QTY: VAR.  
NOTES: 1. MAKE FROM SOLON'S 08-L-26-718 BELLEVILLE SPRING WASHER. MATERIAL: INCONEL 718.



DETAIL D  
SCALE 4 : 1

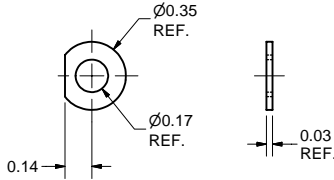


SECTION B-B  
SCALE 1 : 1



2 6.00" CF GASKET MODIF. - 106




FILE NAME: 7102-024  
SHEET NO.: 1  
DFT. SCALE: FULL  
MATERIAL: MAKE FROM VARIAN FG-0600-CU OR EQUIV.  
QTY: ----  
NOTES:



M4 WASHER MODIFICATION

FILE NAME: 7102-024  
SHEET NO.: 1  
DFT. SCALE: 2:1  
MATERIAL: SEE NOTE 1  
QTY: VAR.  
NOTES: MAKE FROM McMASTER-CARR'S 90965A150 M4 WASHER. MATERIAL: 316 ST. STEEL.

FOR MACHINING LUBRICANT USE ONLY  
ALKALINE DETERGENT LUBRICANT CIMSTAR 40  
OR EQUIVALENT APPROVED BY CORNELL LEPP

 		ITEM	DWG. NO.	DESCRIPTION			G1	G2	G3	REMARKS		REV.
								QUANTITY				
D	PRINT DISTR.	PLOT DATE: 8/30/2007 CAD FILE NAME: 7102-024.idw										
7102-024 SH. NO. 1 OF 2	CR-1	UNLESS OTHERWISE SPECIFIED:  DIMENSIONS ARE IN INCHES: TOLERANCES ON: .00 ± .010 .000 ± .005 FRACTIONS ± 1/64 ANGLES ± 0.5° ALL SURFACES ✓		<div><div>CORNELL UNIVERSITY Floyd R. Newman Laboratory Ithaca, NY 14853</div></div> <div>ERL Injector Hardware Gaskets</div>								
		CHECKED BY: J. Sears APPROVED BY: J. Sears		DRAWN BY dme4		DRAWN FOR M. Liepe		DATE 2/24/2006		SCALE		D

